



After The Crisis

IDENTIFYING AND MANAGING THE HUMAN IMPACT ON SURVIVORS, FAMILY, CO-WORKERS AND COMMUNITY TRICIA KAGERER |

EXECUTIVE DIRECTOR CONSTRUCTION DALLASGALLAGHER



The following CE credits are offered for this session:



1.0 AIC CPD Credit | AGC of America has been approved to offer Continuing Professional Development (CPD) credits for qualifying programs by the [American Institute of Constructors](#) (AIC).



1.0 SMPS CEU Credit | AGC of America is approved by the [Society for Marketing Professional Services](#) (SMPS) to offer SMPS CEUs.



1.0 AIA Learning Unit (LU) | The Associated General Contractors of America is a registered provider of AIA-approved continuing education under Provider Number G523. All registered AIA CES Providers must comply with the AIA Standards for Continuing Education Programs.

How to earn CE hours for this session

Participants must:

1. Check in with attendance scanner at the door or in the back of the room.
2. Attend at least 95% of the session.
3. Complete the session and post-program evaluation.

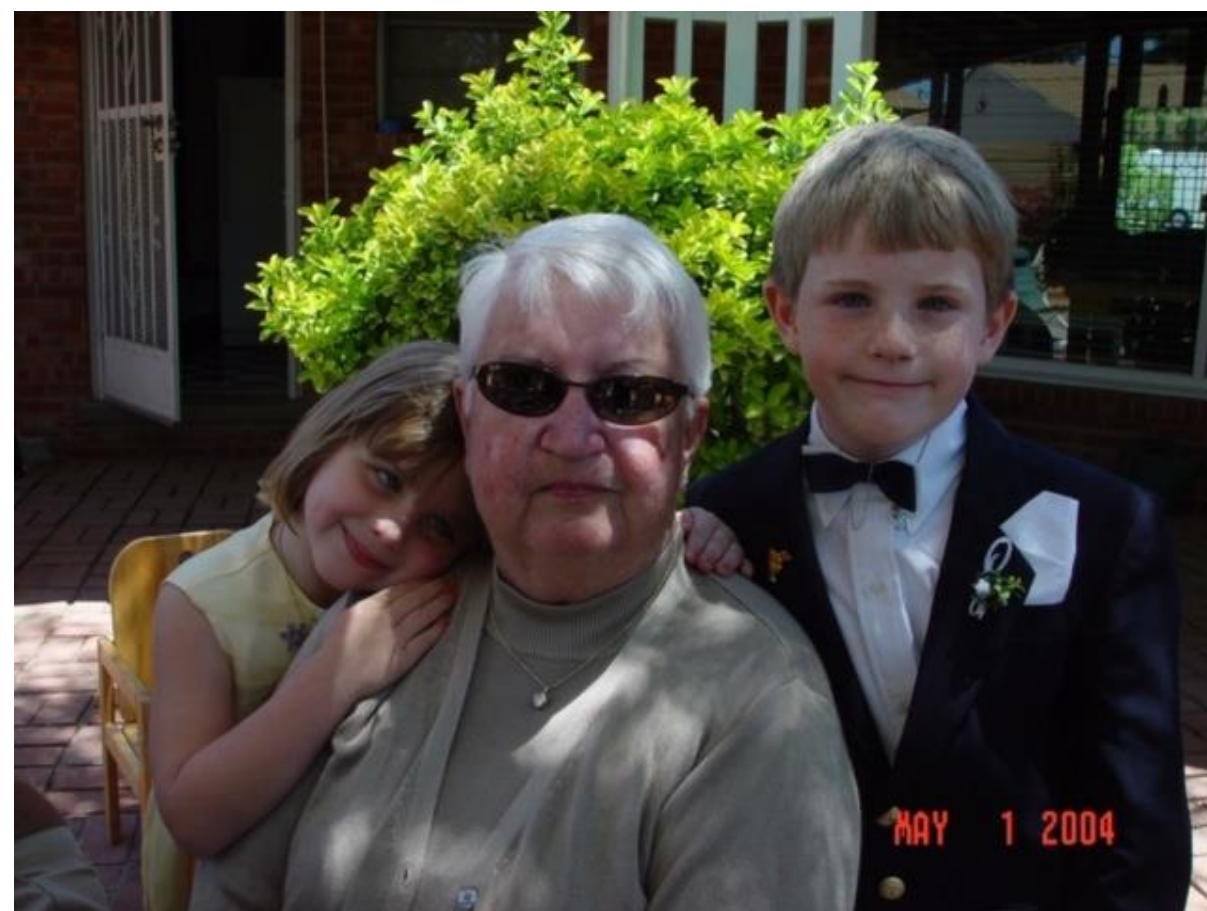
Additional instructions will be emailed to attendees requesting CE credits.

For those requesting AIA credits, please provide your AIA number so we can report your attendance. You may contact **Jo-Anne Torres**, Manager of Professional Development and Continuing Education, at jo-anne.torres@agc.org or call (703) 837-5360 for questions.

Learning Objectives

By the end of this session, participants will be able to:

1. Identify those indirectly impacted by the crisis.
2. Design a Human Impact Mitigation Plan.
3. Apply strategies for identifying and assisting at-risk personnel and for implementation after a crisis event.
4. Identify untapped resources in your current insurance, community and wellness plans.





December 31, 2007



OSHA News Release - Region 6

U.S DEPARTMENT OF LABOR

Please note: Information in some news releases may be out of date or may no longer reflect OSHA policy.

Region 6 news release OSHA 07-1899-DAL

Dec 31, 2007

\$324 K

U.S. Department of
Labor's OSHA fines two
construction contractors

combined **\$324,000**
following asbestos
exposure inspection



March 7, 2008

April 17, 2008





June 5, 2008



WORLD STOP

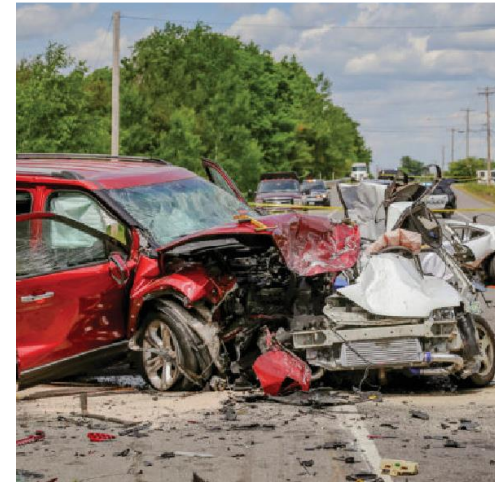
1. Administration
2. Referenced publication
3. Definitions

#1 Creating an All _____ Hazards Plan





It's **not**
just about
accidents





#2 Post Crisis Intervention Program

We must remember the people.

Families

Internal First Responders

Coworkers (Subcontractors)

Community



Employee Assistance Programs are not enough

Need Help?

1-800-888-8888

01

Employees and families have to make the first step and the typically don't.

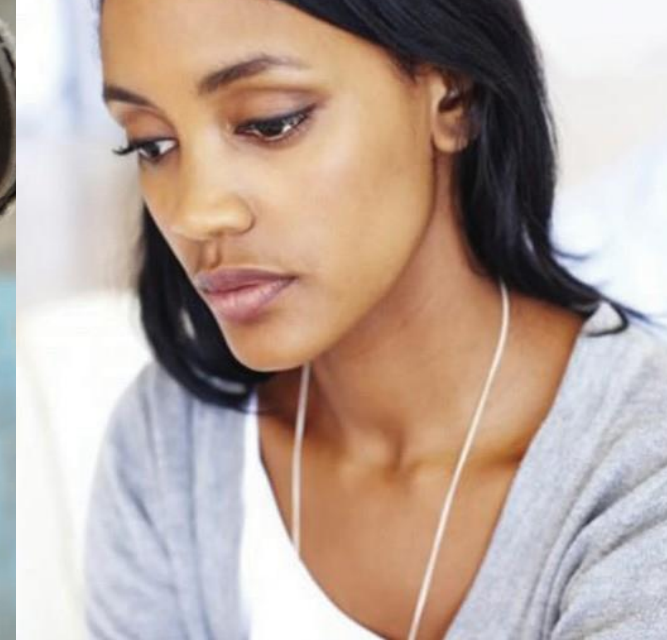
02

Language barriers

03

Cultural issues

The Families



Families



Employee Benefits

Workers compensation Funeral Costs
Life Insurance

Medical Bills Groceries

School Supplies



www.kidschance.org

Families



If you owe it—pay it.

The Internal First Responders



Firefighters and police **signed up to run toward a problem** not run away from it.



Construction Staff **did not sign up to be first responders.** They signed up to build buildings.

Coworkers



Pastor Lopez



Communities





Your Reputation

It takes years to develop your reputation and **an instant to lose it.**

Does your company have enough good will to recover?

Post Crisis Human Mitigation Plan

Post Crisis Human Mitigation Plan

Writing a policy is easy. Implementing it
and facilitating lasting change is hard.

Step 1



Post Crisis Human Mitigation Plan

Identify People At Risk

Step 2



At Risk Suicide



CRY FOR HELP

Talking about feeling trapped or in unbearable pain

Talking about being a burden to others

Increased use of alcohol or drugs

Acting anxious or agitated; behaving recklessly Sleeping
too little or too much

Withdrawing or feeling isolated

Showing rage or talking about seeking revenge Extreme
mood swings

At Risk Suicide



CPR FOR THE BRAIN

Ask the question in a caring way.

You have been going through a really hard time lately.

Are you thinking about suicide?

If Yes – what are you thinking about doing? Listen –

be there – non judgement.

You cant fix it – you can be there. I am sorry

you are going through this. You are not alone in this.

Bring in others – Clinic – hotline –

professionals, family members, other people.

Follow up – stay in touch for long term.

Schedule – knowing someone is thinking about

you makes a big difference. Research shows we save lives.

Resources



WELCOME TO

MAN THERAPY

Because you can't just rub some dirt on your emotions.

www.mantherapy.org

Construction Industry Alliance for Suicide Prevention



Suicide Prevention in Construction Resources

CFMA
webinar

Uniting the Construction Industry Behind Suicide Prevention

NATIONAL
SUICIDE PREVENTION LIFELINE
1-800-273-TALK (8255)
suicidepreventionlifeline.org

24/7 free & confidential emotional support to people in suicidal crisis or emotional distress

CRISIS TEXT LINE |
Text HELLO to 741741
Free, 24/7, Confidential

24/7 free crisis intervention — text HELLO to 741741

posters

Free flyers & posters ready to print & display

10
questions

What construction owners & supervisors must ask to create cultures promoting mental health awareness & suicide prevention

ACTION steps

How to implement upstream, midstream & downstream tactics to help save lives

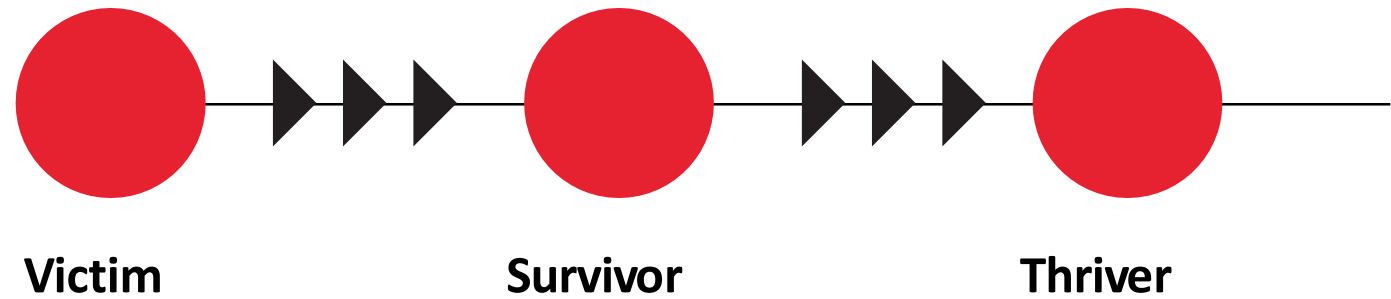
Take a MindWise Screening
MindWise INNOVATIONS

Take an anonymous, confidential & free mental health screening

ANALYSIS & integration

Evaluate & build mental health promotion & suicide prevention into the workplace

Focus on The Positive





You are not alone

Make a difference in your little corner of the world...



?

Tricia Kagerer | Jordan Foster
Construction

Email:
tkagerer@jordanfosterconstruction.com

